

## APPLICATION

DRF flat roof access skylight is an energy-efficient hatch that acts as a skylight while providing access to flat roofs. A special opening system of patented hinges and gas springs safely open the window and secure it in the open position at 80 degrees. This window utilizes Fakro DU6 triple-pane glazing mounted on insulated multi-chamber PVC frame.

## FEATURES

- Suitable for roof pitches between 2-15 degrees.
- Sound reduction index Rw 38 dB.
- The DRF roof access skylight is an energy-efficient, DU6 glazing unit with a Class P2A anti-burglary inner pane and a window U-factor= 0.23 BTU/h ft²F.
- Range of internal and external accessories available.

### FRAME STRUCTURE:

Multi-chamber PVC profile insulated with polystyrene.

### GLAZING:

DU6 - triple pane passive glazing with warm spacers, argon gas and two low-E coatings. Tempered external and laminated internal glass.

### TERMINATION BAR:

Included aluminum profiles to secure roofing. Membrane into the skylight frame.

### OPENING METHOD:

Manually, up to an angle of 80°

### WARRANTY:

10 years for skylight and glazing, 2 years for gas springs.

### DOOR HARDWARE:

Gas springs to facilitate operation of the sash.



SKU: DRF DU6

## FLAT ROOF ACCESS SKYLIGHT

## DIMENSIONS AND APPEARANCE

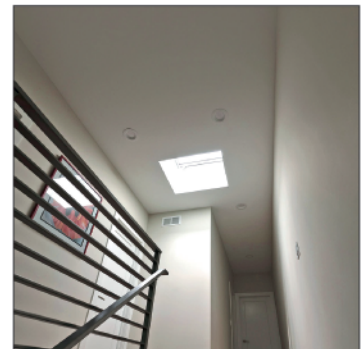
>> CLICK TO VIEW ADDITIONAL DETAILS AND PRICING <<

### TECHNICAL PARAMETERS:

Technical parameters	Glazing unit type		Harmonised standards
	Unit	DU6	
U-factor for window	[BTU/h ft²F]	0.23	NFRC 100
U-factor for glazing unit	[BTU/h ft²F]	0.18	NFRC 100
SHGC		0.26	NFRC 200
Condensation resistance	-	70	NFRC 500
Visible transmittance	-	0.35	NFRC 200
Impact resistance	Class 5 - 950 mm		EN 14351-1:2006+A2:2016
Positive design pressure (DP)	3600 Pa (~75.19 psf)		NAFS 2011 / NAFS 2017
Negative design pressure (DP)	-3600 Pa (~-75.19 psf)		
Water penetration resistance test pressure	720 Pa (~15.04 psf)		
Canadian air infiltration/exfiltration level	A3 Level (NAFS-11)/ A3 Level (NAFS-17)		

### OPTIONAL ACCESSORIES:

Mounting accessories	- The XRD/W installation base allows raising the access roof light above the roof by 6". Maximum 3 bases can be joined.
Internal accessories	- AMZ/F Solar awning blind
External accessories	- ARF/D - APF/D pleated blinds



For more detailed information check the second page

For a complete list of options visit [www.AccessDoorsAndPanels.com](http://www.AccessDoorsAndPanels.com)

## PROJECT DATA

Custom Sizes Available - Fast!

Scan or Click



To view Pricing and Additional Product Info.

PROJECT NAME :	QTY	W	H	OPTIONS
ARCHITECT :				
DEALER :				
CONTRACTOR :				
LOCATION :	SPECIAL INSTRUCTIONS :			
DATE :				
TAGGING INSTRUCTIONS :	SUBMITTAL APPROVAL : (signature or stamp)			

TELEPHONE:  
1-888-457-1275  
FAX:  
1-888-626-2907



PO BOX 66738 #76520,  
SAINT LOUIS, MO  
63166-6738  
USA








WEBSITE:  
[www.AccessDoorsAndPanels.com](http://www.AccessDoorsAndPanels.com)  
E-MAIL:  
[info@AccessDoorsAndPanels.com](mailto:info@AccessDoorsAndPanels.com)



# DRF DU6

# FLAT ROOF ACCESS SKYLIGHT

SIZE:						
		30" x 30"	30" x 36"	36" x 36"	36" x 48"	48" x 48"
Rough opening	A x B	22½" x 47"	25" x 47"	22½" x 54"	25" x 54"	30" x 55"
Outside frame	S x L	22" x 46⅝"	24½" x 46⅝"	22" x 53½"	24½" x 53½"	29½" x 53½"

